



# Monitoring Programs for Agriculture

- + Large-area collection
- + High in-season revisit rates
- + Field-level detail
- + Quick delivery and easy access
- + Cost-effective

---

Version 1.0 | December 2015

[planet.com](http://planet.com) | [sales@planet.com](mailto:sales@planet.com)

## Problem

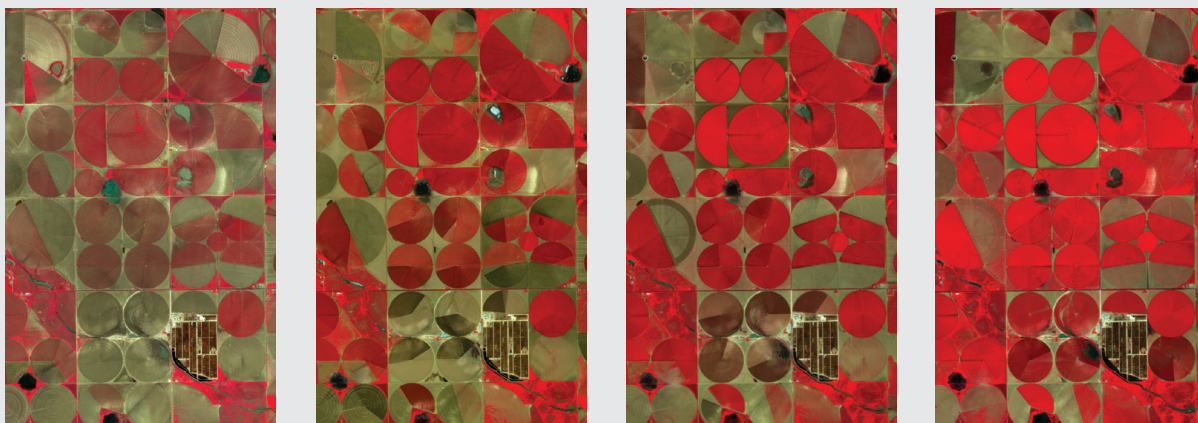
A reliable supply of high-quality, affordable information for field management is difficult to find. Aerial surveying can be prohibitively expensive and unable to cover large areas, and other satellite constellations lack the imaging frequency and spatial resolution necessary to make effective management decisions.



## Solution

Planet Labs' Monitoring Programs for Agriculture are a cost-effective satellite imaging solution for comprehensive, regular coverage of large agricultural areas. The RapidEye constellation collects multi-spectral imagery every day over your areas of interest multiple times throughout the growing season.

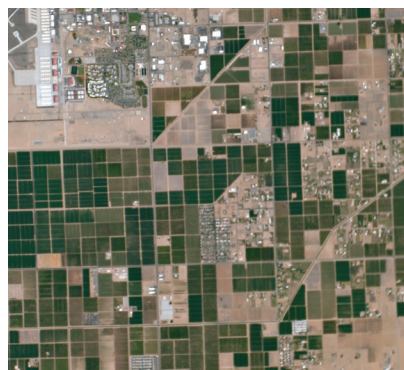
With the combination of bands used by the RapidEye constellation, especially the unique red-edge band, you get the information you need to help growers farm sustainably, increase land productivity, and reduce input costs.



Monitoring fields in Texas, USA (June 14, 2014 - July 07, 2014)

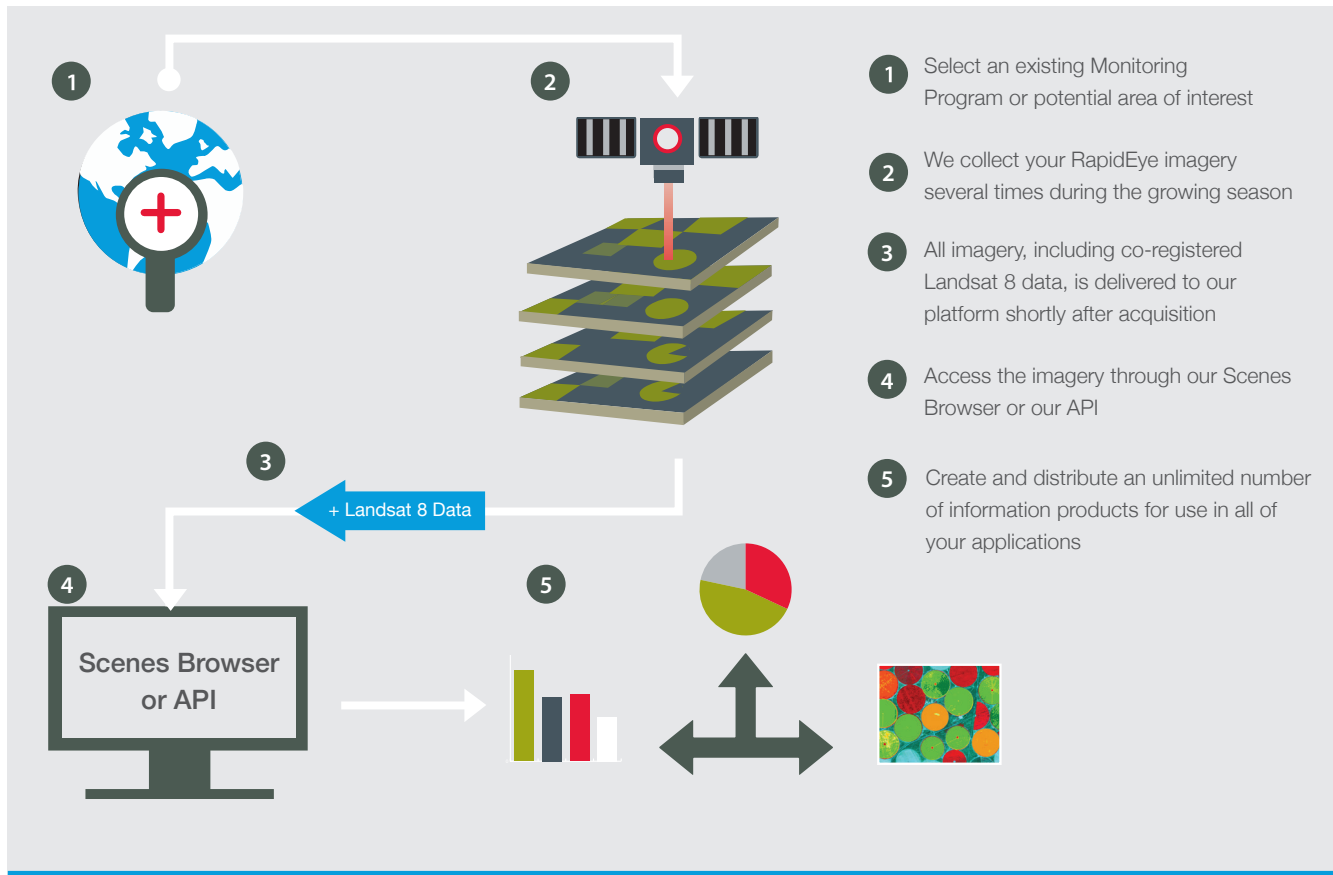
## Details

- + **Imagery:** You get access to the latest 5-meter RapidEye imagery with the option of archived imagery from previous seasons dating back to 2009. Landsat 8 imagery is co-registered to RapidEye data for improved multi-sensor analysis, and is available at no additional cost.
- + **Imaging frequency:** We image your area of interest regularly during the growing season.
- + **Access:** All the imagery over your area of interest is accessible from your desktop through a simple cloud-based solution. You can easily integrate our API with your application or create a new one on top of it.



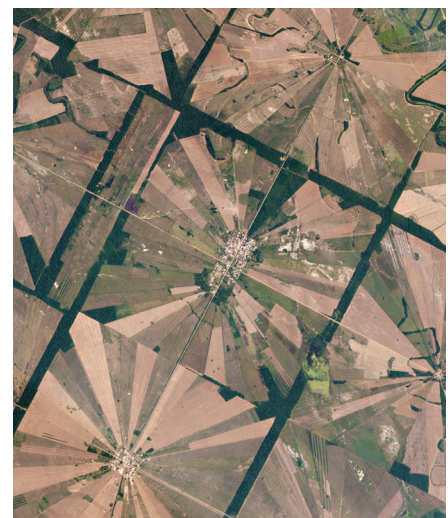
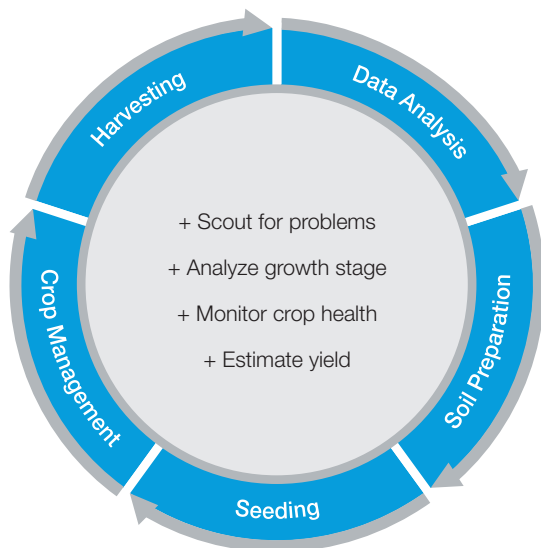
Arizona, USA

## How the Program Works



## Applications

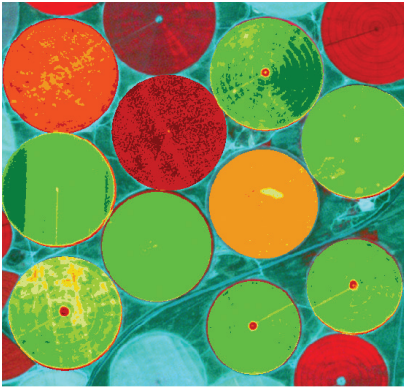
Our Monitoring Programs for Agriculture provide you with the necessary imagery to derive information for making field-management decisions year-round.



Tierras Bajas, Bolivia

## Benefits

---



Washington - Normalized Difference Vegetation Index (NDVI)

- + **Large-area collection:** Get access to the most complete dataset of 5-meter imagery.
- + **Multiple in-season coverage:** Monitor how fields are changing throughout the season.
- + **Field-level detail:** Get the necessary level of detail for your precision agriculture decisions.
- + **Quick delivery and easy access:** Access and manage all the imagery using our API or web applications.
- + **Cost-effective:** An affordable subscription-based solution. Accurately budget your imagery expenses.

## Current Program Locations

---



## For Further Information

---

[sales@planet.com](mailto:sales@planet.com)

Planet Labs San Francisco  
Toll Free: 844 892-0786  
International: +1 415 829-3313

Planet Labs Berlin  
Phone: +49 30-6098300-100  
Fax: +49 30-6098300-101

Planet Labs Lethbridge  
Toll Free: +1 800 940 3617  
International: +1 403 381-2800